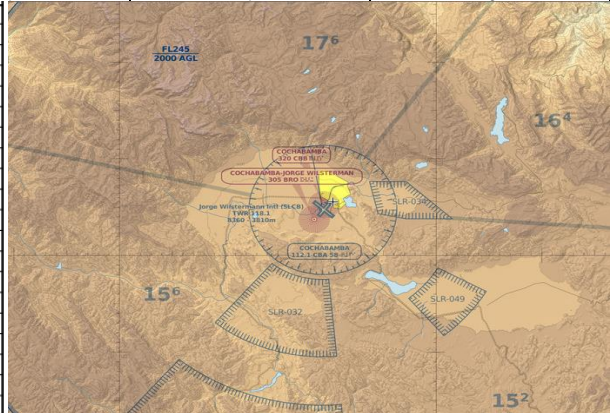
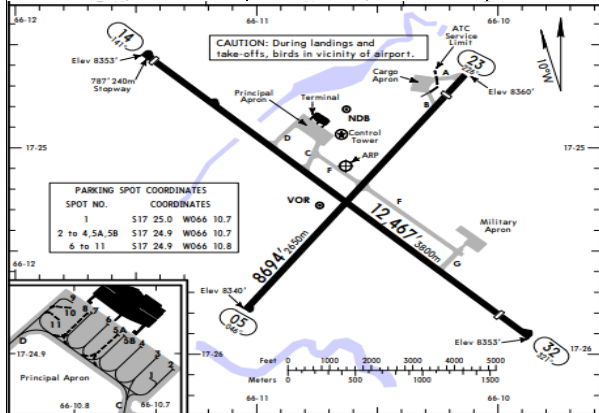


NO VALIDO PARA OPERACIONES REALES		NOT FOR REAL OPERATIONS		SLCB		ELEVATION 8360 FT			
GND	121,9	TWR	118,1	APP	119,3	RADIO	127,1	TA 18000 FT TRL by ATC	



RWY 14/32

SID RWY 14		SID RWY 32	
BITEV TRANSITION		PALOT TRANSITION	
PUNAV 2	AT OR ABV FL170	TEDOK 3	AT OR ABV FL250
MOSGO 2	AT OR ABV FL180	TEREP 3	AT OR ABV FL190
TEREP 2	AT OR ABV FL190	CBA TRANSITION	
TEDOK 2	AT OR ABV FL250	PUNAV 2	AT OR ABV FL170
		MOSGO 2	AT OR ABV FL180

SID RWY 14/32	
VUKRI TRANSITION	
MEXAM 2	AT OR ABV FL250
ATAVO 2	AT OR ABV FL170
VAREB 3	AT OR ABV FL180
PORKI TRANSITION (RNAV)	
MUNET 2 (RNAV/GNSS)	AT OR ABV FL170

IAC RWY 14		IAC RWY 32	
VOR A PALOT 17000 ft	MISSED APCH 9200ft RDL140 from CBA DCT PORKI at 16000FT and L HOLDINGS	ILS Y / VOR V ESNAR 12800 ft / 13100 ft ARC 16 DME	MISSED APCH RWY HDG until 3.7 DME to 11000ft L TURN to "R" L TURN RDL202 DCT to MOXIL at 16000ft R HOLDINGS CRS 320 CAT 1
VOR V ISTUL 18000 ft ARC 7 DME		ILS Z / VOR U CBA 18000 ft L TURN BASE 16 DME HDG 156° / HDG 158°	
VOR Z PALOT 17000 ft ARC 7 DME		RNAV (GNSS) Z CB741 / CB742 / PORKI 17000ft / 16000 ft ESNAR (IF) 13300 ft CRS321	MISSED APCH 10300ft to CB747 L TURN to 16000ft DCT to CB748 and L HOLDINGS

RWY 05/23

ONLY FOR VISUAL FLIGHTS

GENERAL

RADIOAYUDAS NAVIGATION AID's			CIRCUITO CIRCUITS	
CBA	DVOR/DME	112,1	RWY 23 / RIGHT CIRCUITS FOR ACFT's > 5700 Kg.	
ILCO	LOC	110,5		
CBB	NDB	112,2		
R	L	402		